

KD-Validated Anti-ACAP2 Rabbit Monoclonal Antibody
Rabbit monoclonal antibody
Catalog # AGI1005**Specification****KD-Validated Anti-ACAP2 Rabbit Monoclonal Antibody - Product Information**

Application	WB, FC, ICC
Primary Accession	Q15057
Reactivity	Rat, Human, Mouse
Clonality	Monoclonal
Isotype	Rabbit IgG
Calculated MW	Predicted, 88 kDa , observed, 88 kDa KDa
Gene Name	ACAP2
Aliases	ACAP2; ArfGAP With Coiled-Coil, Ankyrin Repeat And PH Domains 2; KIAA0041; CNT-B2; CENTB2; Arf-GAP With Coiled-Coil, ANK Repeat And PH Domain-Containing Protein 2; Centaurin-Beta-2; Arf GAP With Coiled Coil, ANK Repeat And PH Domains 2; Centaurin, Beta 2; Cnt-B2
Immunogen	A synthesized peptide derived from human ACAP2

KD-Validated Anti-ACAP2 Rabbit Monoclonal Antibody - Additional Information

Gene ID	23527
Other Names	
Arf-GAP with coiled-coil, ANK repeat and PH domain-containing protein 2, Centaurin-beta-2, Cnt-b2, ACAP2, CENTB2, KIAA0041	

KD-Validated Anti-ACAP2 Rabbit Monoclonal Antibody - Protein Information**Name** ACAP2**Synonyms** CENTB2, KIAA0041**Function**

GTPase-activating protein (GAP) for ADP ribosylation factor 6 (ARF6). Doesn't show GAP activity for RAB35 (PubMed:30905672).

Cellular Location

Cell membrane. Endosome membrane; Peripheral membrane protein. Note=Colocalizes with RAB35 at the membrane protrusions of HEK293T cells.

Tissue Location

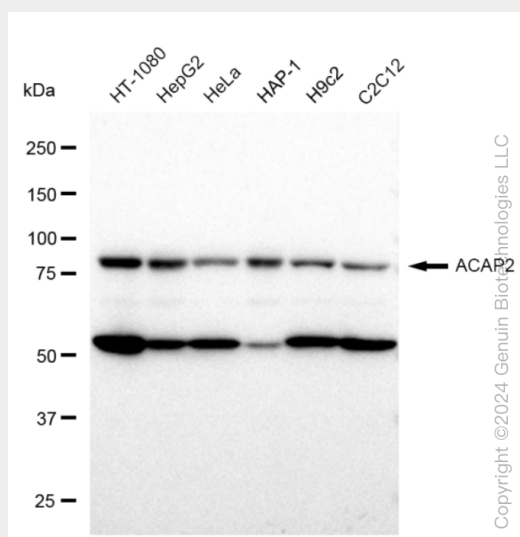
Widely expressed. Highest level in lung.

KD-Validated Anti-ACAP2 Rabbit Monoclonal Antibody - Protocols

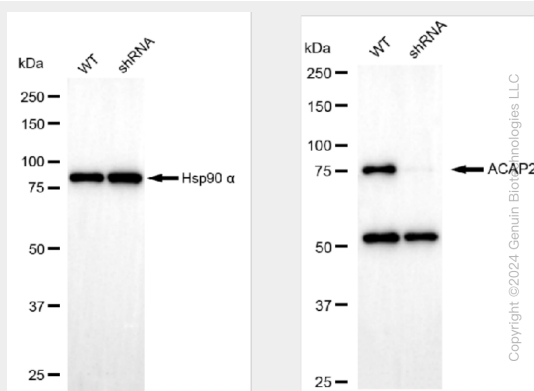
Provided below are standard protocols that you may find useful for product applications.

- [Western Blot](#)
- [Blocking Peptides](#)
- [Dot Blot](#)
- [Immunohistochemistry](#)
- [Immunofluorescence](#)
- [Immunoprecipitation](#)
- [Flow Cytometry](#)
- [Cell Culture](#)

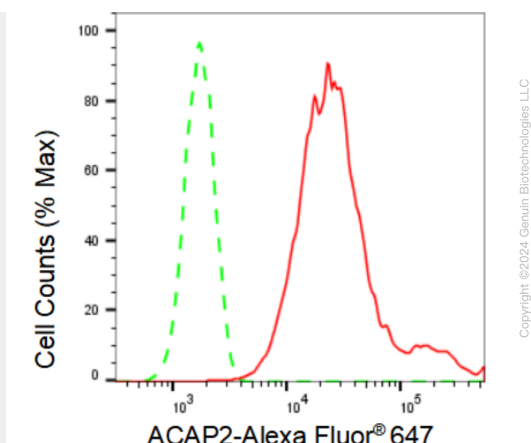
KD-Validated Anti-ACAP2 Rabbit Monoclonal Antibody - Images



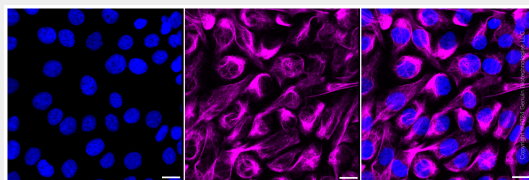
Western blotting analysis using anti-ACAP2 antibody (Cat#AGI1005). Total cell lysates (30 µg) from various cell lines were loaded and separated by SDS-PAGE. The blot was incubated with anti-ACAP2 antibody (Cat#AGI1005, 1:5,000) and HRP-conjugated goat anti-rabbit secondary antibody respectively.



Western blotting analysis using anti-ACAP2 antibody (Cat#AGI1005). ACAP2 expression in wild type (WT) and ACAP2 shRNA knockdown (KD) HeLa cells with 30 µg of total cell lysates. β-Tubulin serves as a loading control. The blot was incubated with anti-ACAP2 antibody (Cat#AGI1005, 1:5,000) and HRP-conjugated goat anti-rabbit secondary antibody respectively.



Flow cytometric analysis of ACAP2 expression in HT-1080 cells using ACAP2 antibody (Cat#AGI1005, 1:2,000). Green, isotype control; red, ACAP2.



Immunocytochemical staining of HT-1080 cells with ACAP2 antibody (Cat#AGI1005, 1:1,000). Nuclei were stained blue with DAPI; ACAP2 was stained magenta with Alexa Fluor® 647. Images were taken using Leica stellaris 5. Protein abundance based on laser Intensity and smart gain: High. Scale bar: 20 μ m.